

!"#\$%&' ( ) &% ' \*+ , +- ./% ' 0-1+23+0-%  
' 040\*3% (3567

!"#\$%&'()\*+),-.\*/)0\*\*\*12'-3%-\*4%2(#-\*/)0  
5'6'%27)8\*9:;19



!"#\$%&' (#)%"

D e d c ed f c a c c e  
a b c afe ? H e a e he  
ec d a e?

A : , & ,  
,



# A Review of Criminal Convictions Among Nurses 2012-2013

Elizabeth H. Zhong, PhD; Carey McCarthy, PhD, MPH, RN

**Introduction:** Nurses with criminal convictions are a subset of the population of nurses. The purpose of this study was to determine the types of criminal convictions among nurses and the impact of these convictions on their nursing careers.

**Methods:** A review of criminal convictions among nurses from 2012 and 2013. The study included nurses who were convicted of a crime and reported to the National Council of State Boards of Nursing (NCSBN) for disciplinary action.

**Results:** The most common criminal convictions were related to child abuse, sexual offenses, and domestic violence. The most common Board of Nursing (BON) actions were suspension and revocation of license.

**Conclusion:** Criminal convictions among nurses are a significant public health issue. The study highlights the need for continued research and education to address this issue and ensure the safety of patients and the public.

**Keywords:** Criminal convictions, nursing, public health, patient safety, nursing regulation



\*+ , - ./%0/1 \$) 2 - ./3 " &/  
4) . ( ) , 5) " 3\$+/6 (#)% " .



2012-2013

A .

, ,

.

\* + , - . / % 0 / 7 \$ 3 ( # ) ( - 8  
9 - 5 3 # - & / 1 \$ ) 2 - .



-  
2013  
2012  
:  
A  
( )

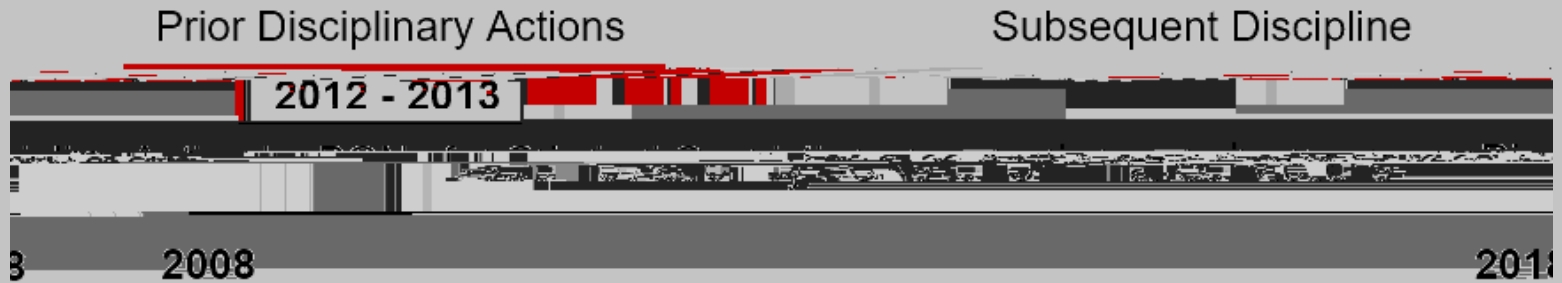
9 - . - 3\$ ( : / ; ' - . # ) % " .

# 9 - . - 3\$ ( : / 4 - . ) < "

A 10- (2008-2018)

A

2012-2013



3

2008

2018

9 - . - 3\$ ( : / = - # : % & .

A

1, 2012

31,

2013

A

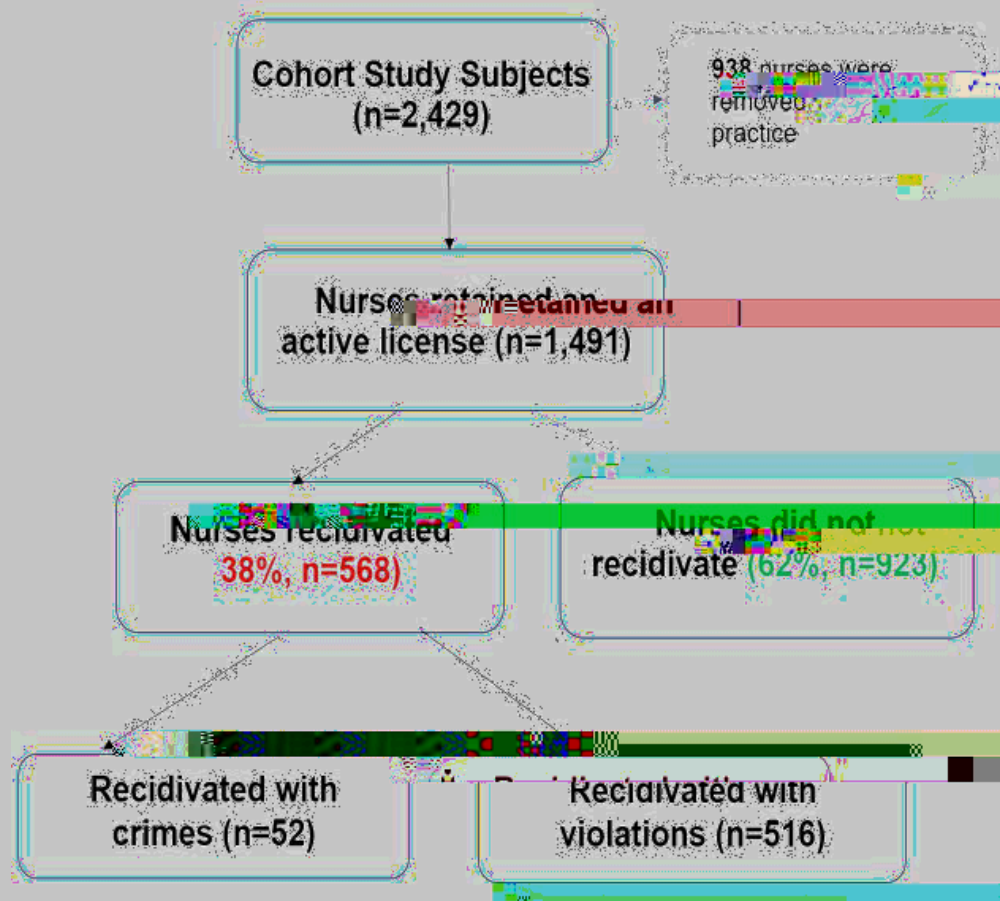
2,000



9 - . - 3\$ ( : / = - # : % & . / > 1 % " ? # @



# 4). ( ), 5)" -/B ' # (% 2 - .



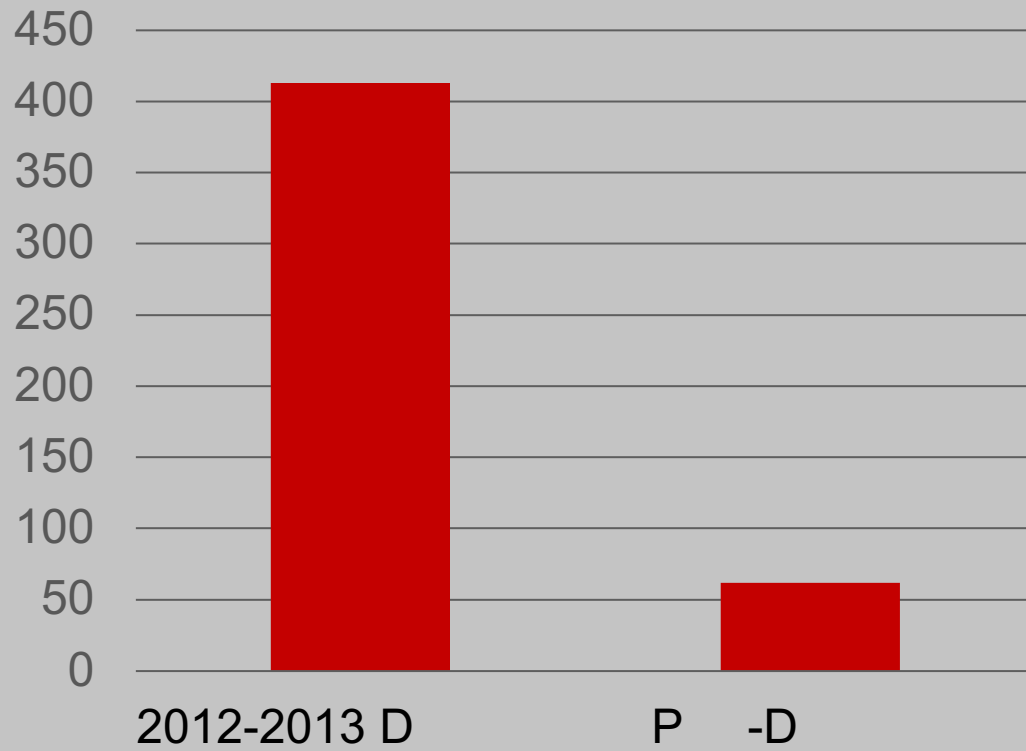


9 - . - 3\$ ( : / ; ' - . # ) % " / C

D'E - F' - "#/G)%51 #)% " .H1\$ 2 - .

A b a a ,  
38% a , a 11%  
a - a / a .

	1\$ " *.785	#9 " *.1#5	1: " *.4!5
	1# " *. : !5	9\$ " *.185	13 " *.785
	1! " *.\$15	#1 " *.115	

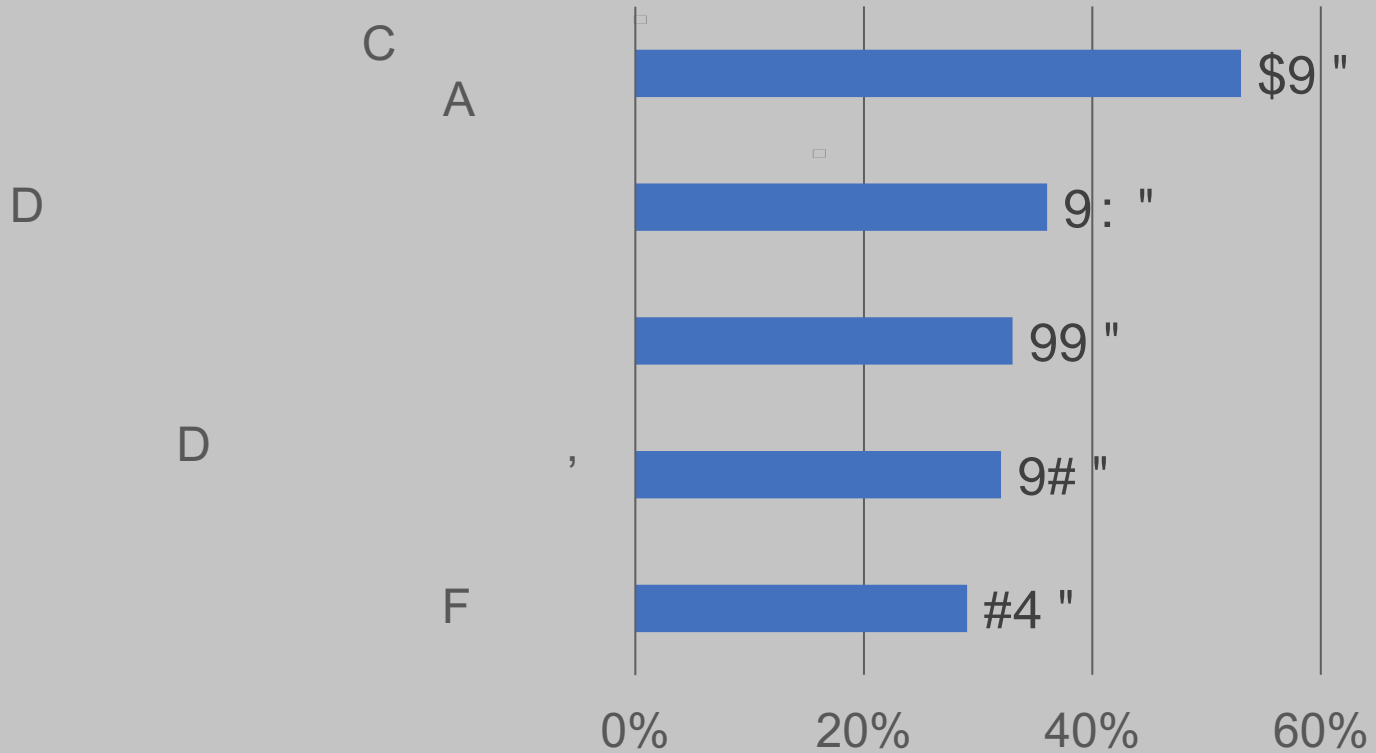


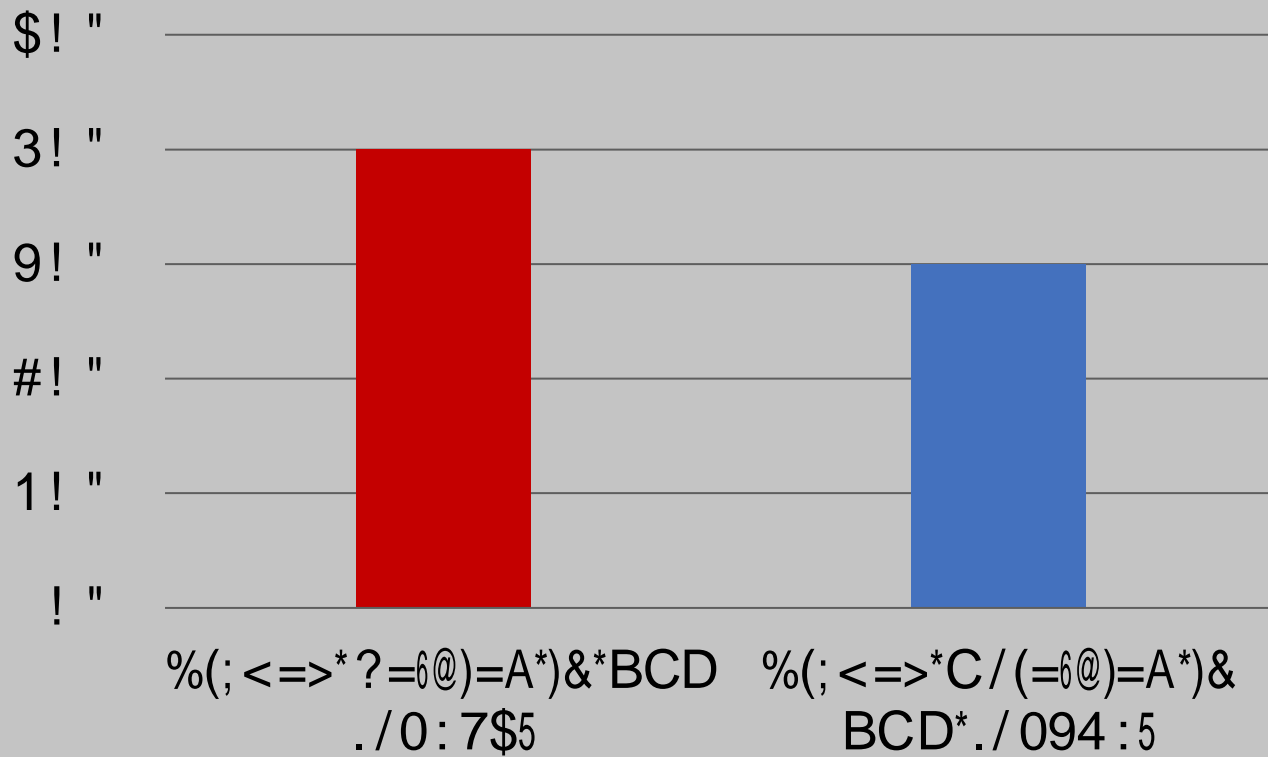




9 - ( )&J) . 2 / 9 3# - . / E + /

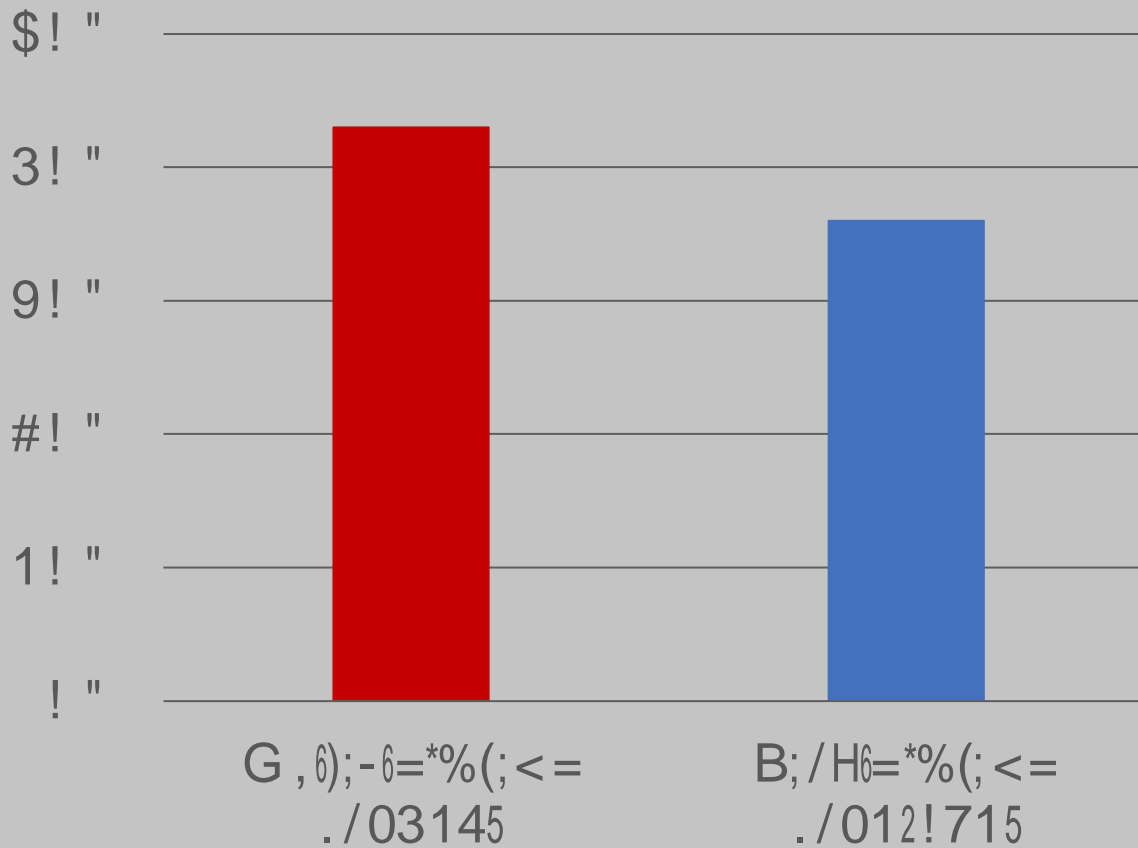
\* + , - . / % 0 / 1 \$ ) 2 - . / > D ) " < 5 - / 1 \$ ) 2 - @







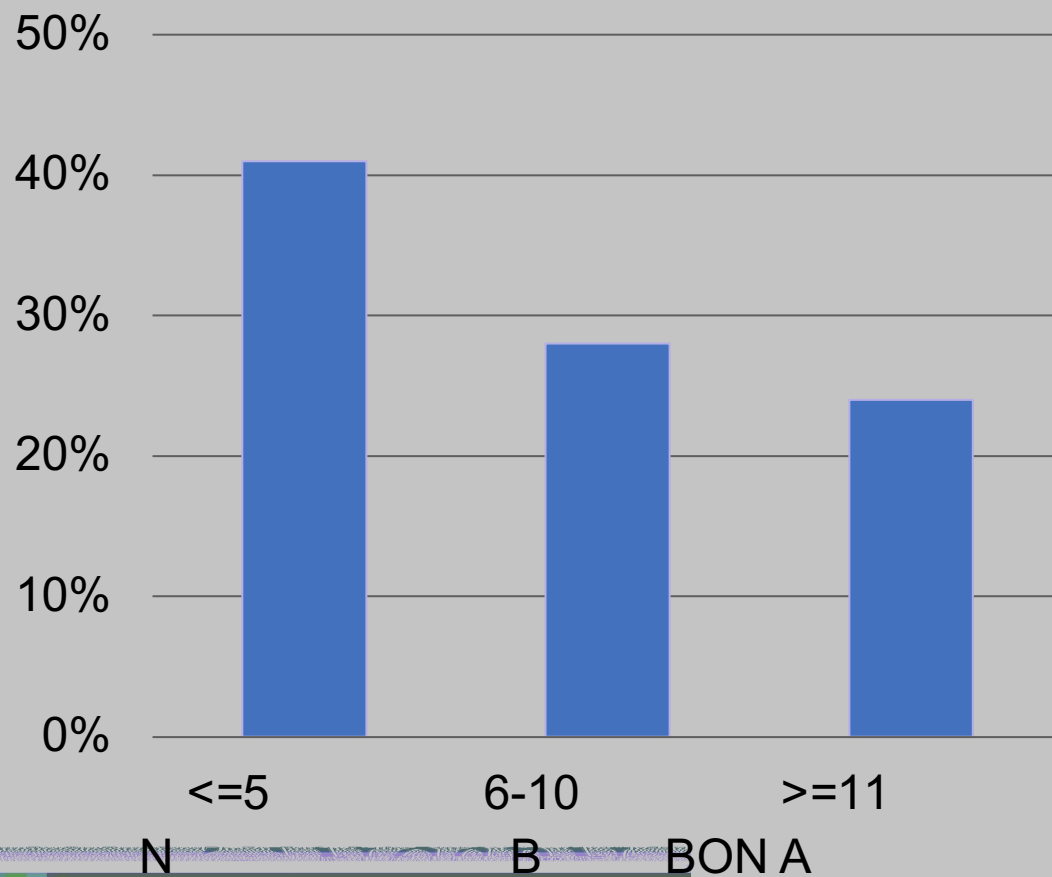
9 - ( )&J) . 2 / 93# - . /  
E+ / = ' 5#) , 5 - / 1 \$) 2 - .



# 9) . K/L3 (#%\$. /6 . . % ()3# - &/M)# : / 9 - ()&)J) . 2

Type of Crimes	Relative Risk (CI)	P
! "#\$% '&' ( ' ) * +	1.35 (1.13-1.61)	<0.001
* , - "#\$% '&' ( ' ) * +	1.31 (1.12-1.55)	0.002
! "#\$% '&' ( ' . - \$ / % 0 / "	1.20 (1.05-1.37)	0.011
* , - "#\$% '&' ( ' . - \$ / % 0 / '"		
1 2 # % 0 3 # "' 4 - 0 5 " 6'		
) 0 , 7 # "' 4 - 0 5 "'		

! "#\$%& ' " ) & \* + ( , ! ! - ( & . / & 0 \$ % " \* ( % 1 " ) & \* + ( ) \$ % & 2 ( 2 3 ( ) " 0 & / & ' & \* 4 ( \$ 4 2 . 5 ( . 6 ) \* " \* ( & . ( % 1 " ( 3 & ) \* ( ' " ) \* 6 \* ( % 1 " ( \* " 0 2 . / ( 5 ) 2 6 7 ( 3 2 ) ( " \$ 0 1 ( 7 2 % " . % & \$ # ( ) & \* + ( 3 \$ 0 % 2 ) 8 ( 9 : ( ; ( < = > ( 0 2 . 3 & / " . 0 " ( & . % " ) ' \$ # 8 ( (



## N) 2 )#3#)% " .

- ! The current analysis was based on data voluntarily submitted to Nursys by BONs. Not all BONs submitted detailed board order attachments.
- ! No direct comparison of the efficacy of disciplinary actions is possible due to lack of information regarding the types of remediation opportunities taken by the disciplined nurses.

1% (5 - )%

"





6 (K' %M5 - &< - 2 - "# .

Maryann Alexander, P D, RN, FAAN,  
C O , N , R a , NCSBN



:

1 % " #3 ( #/! " 0%\$ 2 3#)% "

Elizabeth H. Zhong, P D

E- a : \_\_\_\_\_ @ \_\_\_\_\_ b . \_\_\_\_\_